

# GrowthPower PowerExtract™ from Crawford Software Consulting, Inc.



Crawford Software Consulting, Inc.  
"Bringing Software and Manufacturing Together"™

## PowerExtract from CSCI

The first step in migrating from  
GrowthPower to your new ERP  
system.

This document is proprietary and the contents are the exclusive property of CSCI.

This document may not be reproduced in any form without written permission from CSCI.





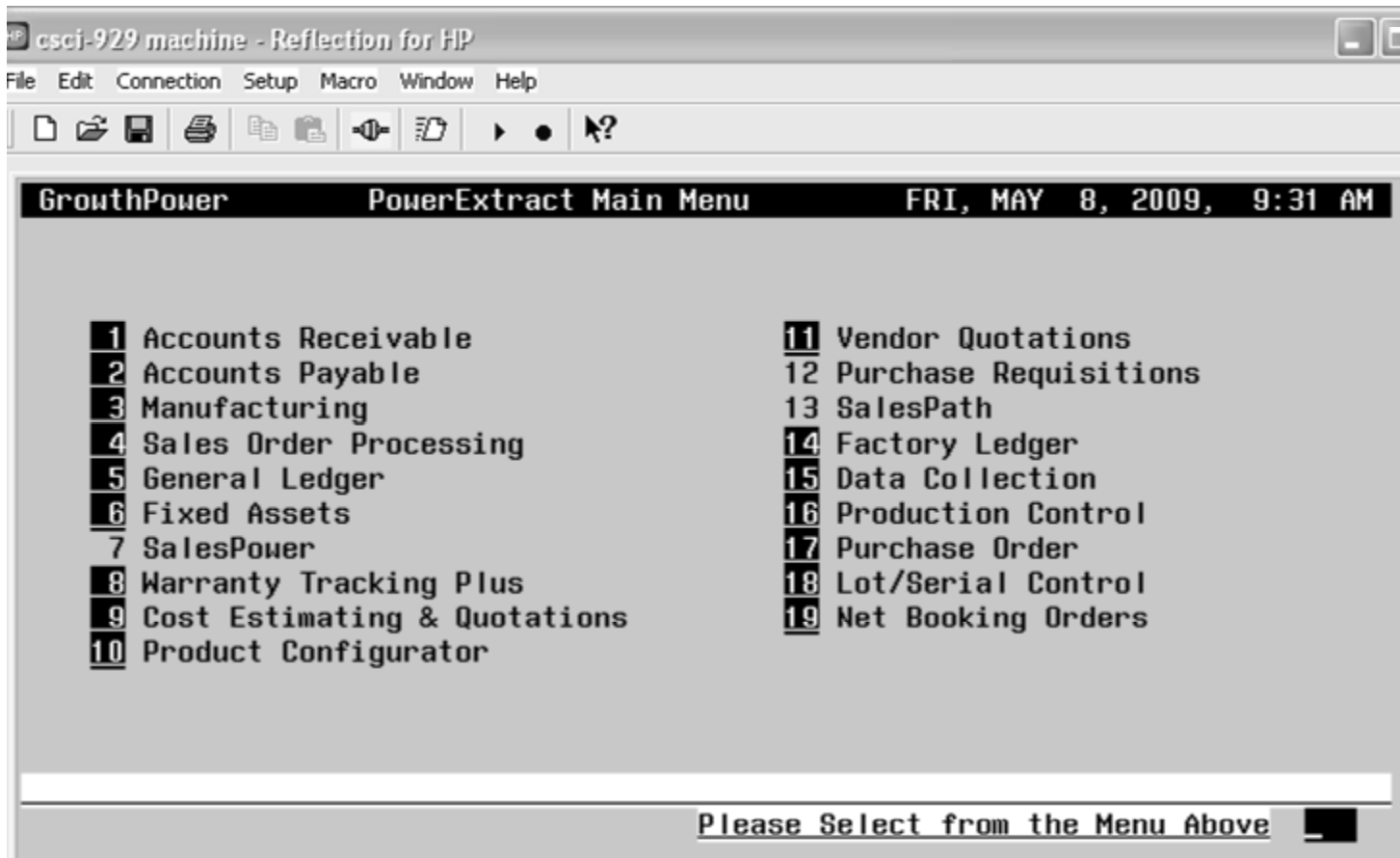
# PowerExtract

- ✓ Extracts all data fields on the database - even extra fields
- ✓ Decode encrypted data elements.
- ✓ Data formatted to newer formats to support newer applications (dates converted to full four year representation).
- ✓ Full reporting, number of records processed, extracted, invalid data.
- ✓ Extract an entire database or a single data set.

# GrowthPower Solutions

*for results driven businesses*

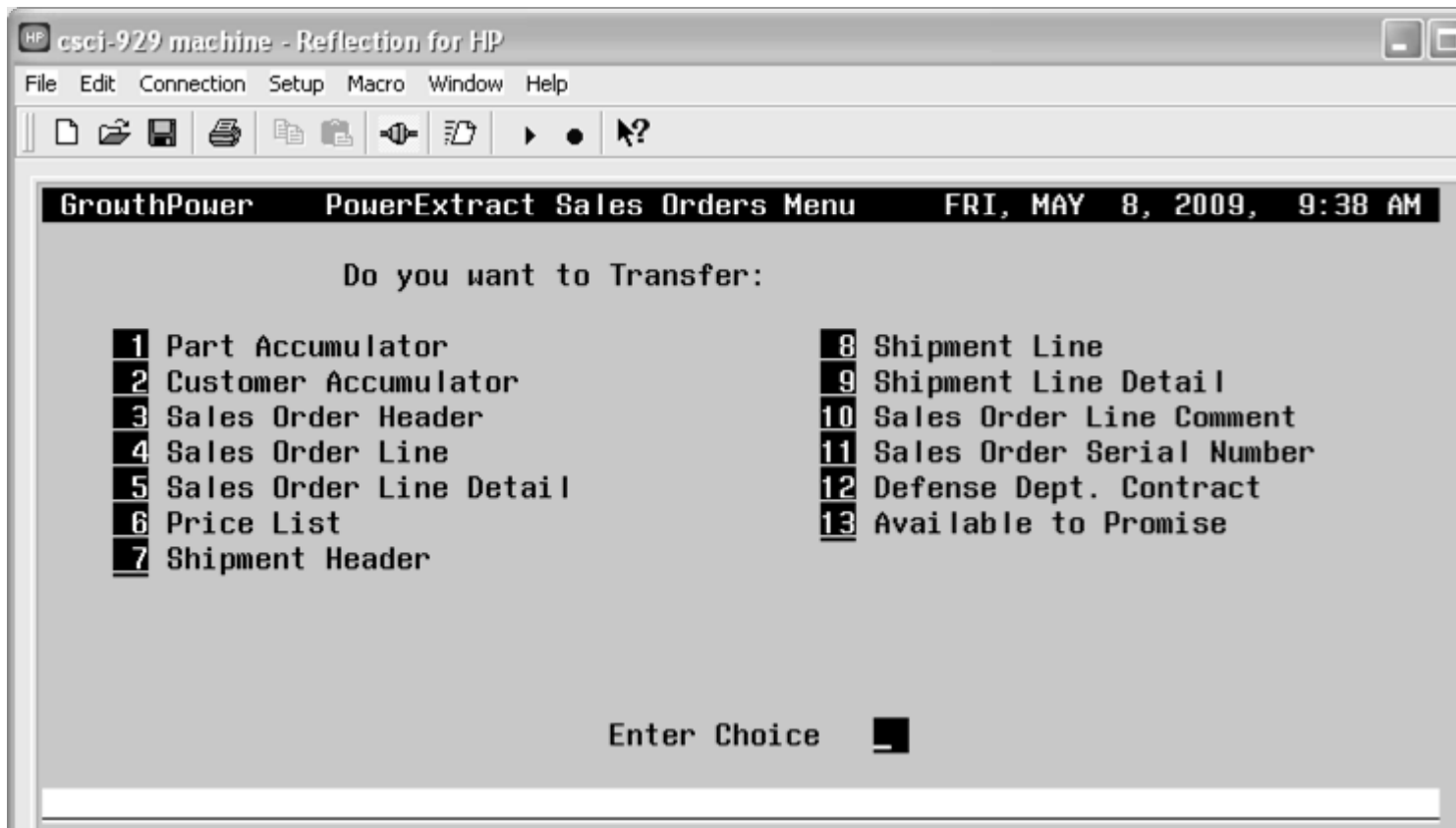
PowerExtract Main Menu – Select the database to extract



# GrowthPower Solutions

*for results driven businesses*

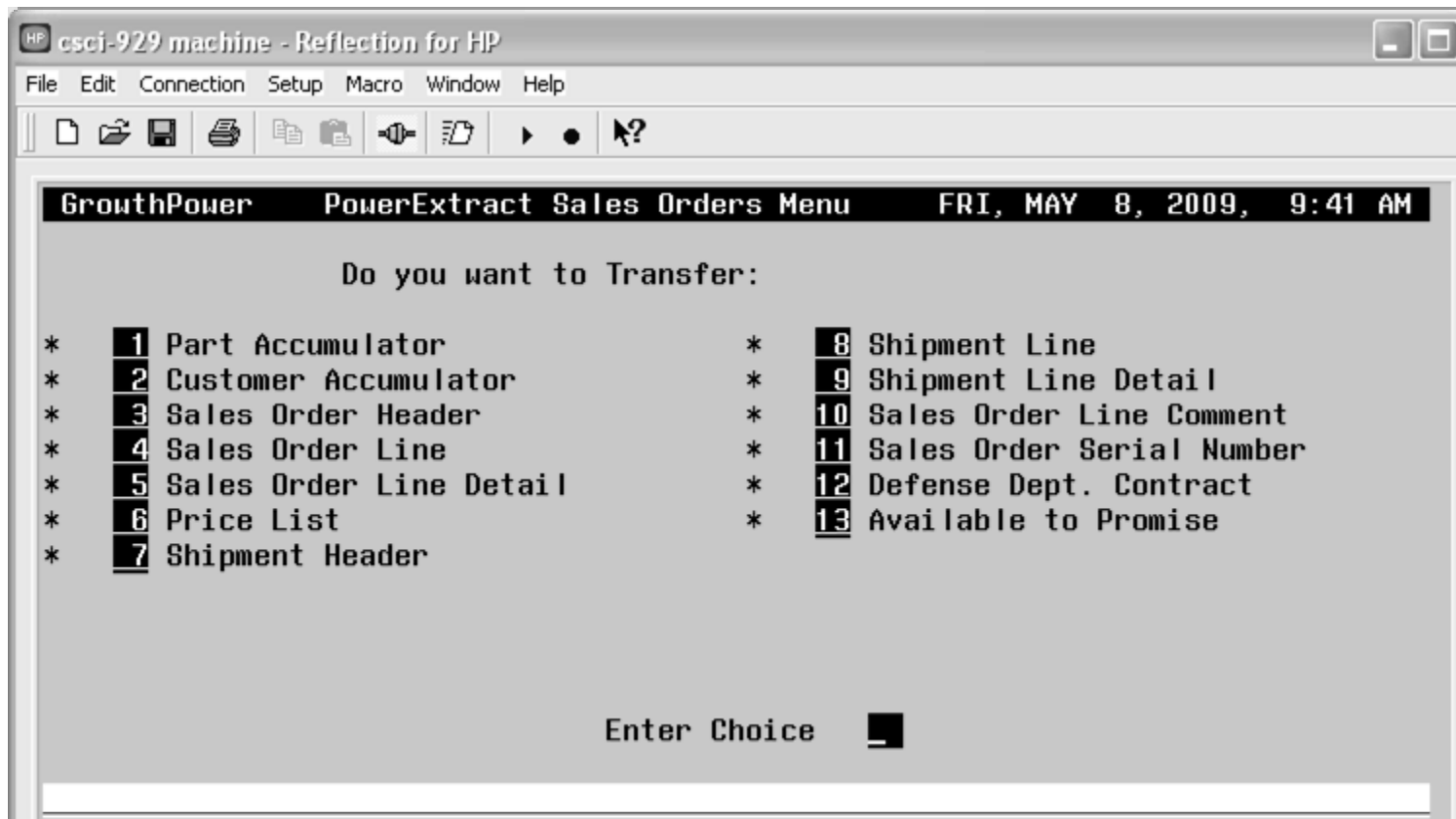
PowerExtract Sub Menu – Select the data set to extract, or all data sets



# GrowthPower Solutions

*for results driven businesses*

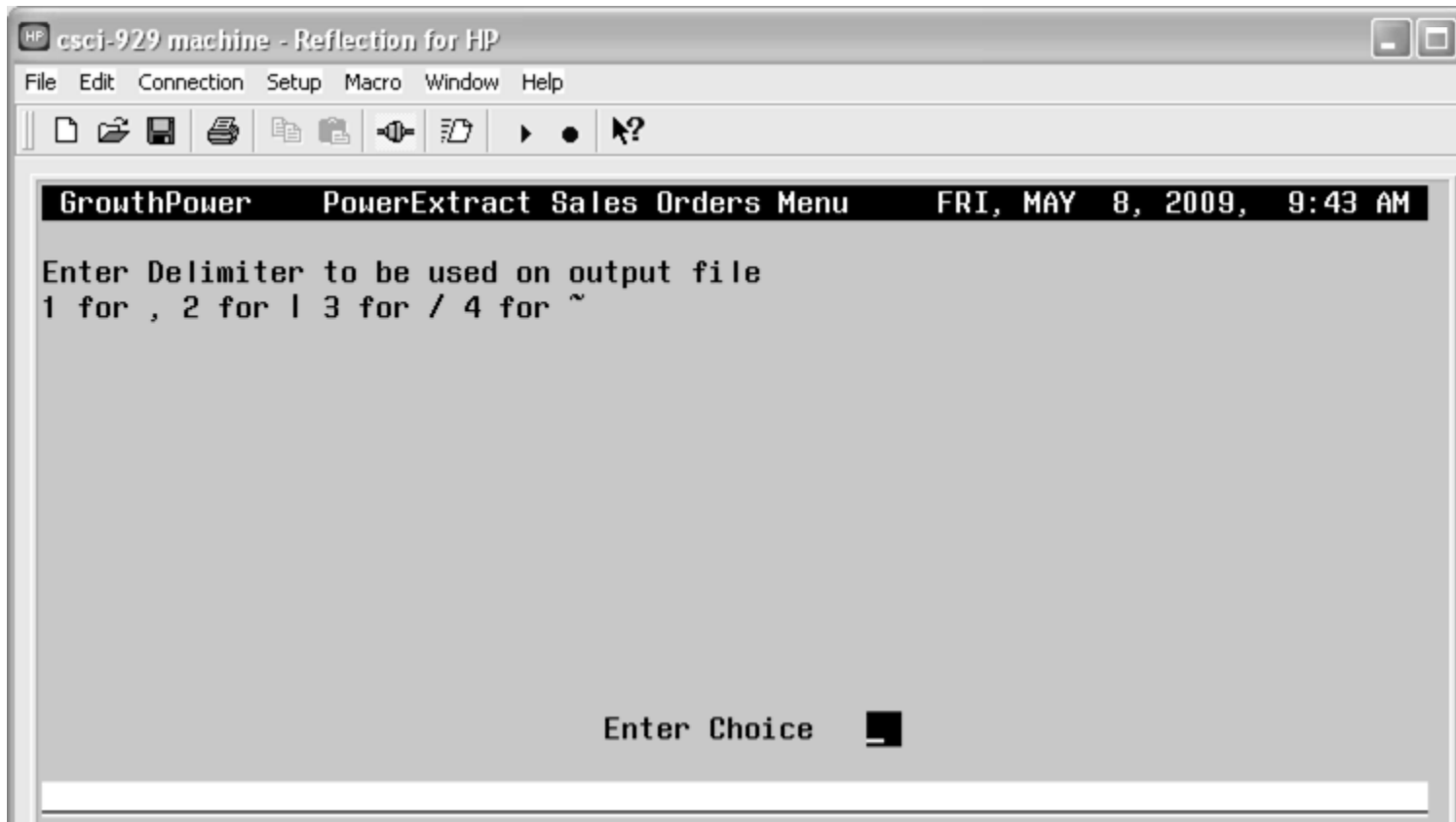
PowerExtract Sub Menu – Items Selected are identified by an \*



# GrowthPower Solutions

*for results driven businesses*

PowerExtract Sub Menu – Choose the delimiter to be used





# GrowthPower Solutions

*for results driven businesses*

## PowerExtract Report – Identifies Records Extracted and File Created

PowerExtract Crawford Software Consulting, Inc. FRI, MAY 8, 2009, 9:47 AM  
CREATE SALES ORDER EXTRACTION FILES PAGE 1  
189 PART-ACCUM; RECORD(S) PROCESSED. (PACCSXTR.PUB)  
26 CUST-ACCUM; RECORD(S) PROCESSED. (CACCSXTR.PUB)  
277 SOH; RECORD(S) PROCESSED. (SOHXSXTR.PUB)  
375 SOL; RECORD(S) PROCESSED. (SOLXSXTR.PUB)  
65 SOD; RECORD(S) PROCESSED. (SODXSXTR.PUB)  
361 PRICELIST; RECORD(S) PROCESSED. (PRCLSXTR.PUB)  
296 SHIP-HEADER; RECORD(S) PROCESSED. (SHPHSXTR.PUB)  
395 SHIP-LINE; RECORD(S) PROCESSED. (SHPLSXTR.PUB)  
93 SHIP-DETAIL; RECORD(S) PROCESSED. (SHPD SXTR.PUB)  
2049 COMMENT; RECORD(S) PROCESSED. (COMMSXTR.PUB)  
321 SERIALNUM; RECORD(S) PROCESSED. (SERNSXTR.PUB)  
2 DD-CONTRACT; RECORD(S) PROCESSED. (DDCOSXTR.PUB)  
166 ATP-SO; RECORD(S) PROCESSED. (ATPSSXTR.PUB)  
Creation of 13 Extract File(s) Completed Successfully.

Any records that cannot be processed due to invalid data are listed on the report.

The report includes the key information for the record so the record can be corrected.



## PowerExtract

- ✓ Pricing per database.
- ✓ Registered to your HP 3000 and account.
- ✓ Full documentation identifies files created and file layout.
- ✓ Programming services to extract your in house developed applications.



# Contact Us

## *To contact CSCI:*

*Steven M. Carr*

Phone: (603) 537 - 9630

Email: [Steven.Carr@Crawford-Software.com](mailto:Steven.Carr@Crawford-Software.com)

*Oren Colegrove*

Phone: (603) 537 - 9630

Email: [Oren.Colegrove@Crawford-Software.com](mailto:Oren.Colegrove@Crawford-Software.com)