

Infinite Possibilities



 **SYSPRO™ 8**
Say Yes to Next

SYSPRO 8 – Infinite Possibilities

SYSPRO is a web based, Cloud-first ERP solution designed to add significant value, flexibility, control and visibility of operations to manufacturing and distribution companies.

With the integration of a number of powerful new features, including a web based version of SYSPRO, social media as a collaboration tool and a host of the hottest new IT capabilities - the benefits of SYSPRO 8 to business are virtually infinite.

At SYSPRO, as part of our promise to simplify success and future-proof business, we are continually evolving our product to optimize business owners' management and control of their organization across the entire supply chain.

Over the next decade, future-thinking businesses will embrace change and transform themselves through connectivity, data, automation, and an increasingly sophisticated workforce. On the shop floor, sensors and software will operate continuously, predicting and preventing equipment failures, optimizing processes and maximizing productivity. A continuous, real-time flow of data will provide information and actionable insights that make production and business processes increasingly visible, predictable and controllable.

With IoT, factories and supply chains will be able to extend beyond traditional 'stages', creating conduits of information that foster transparency and collaboration among suppliers, retailers and customers. Adding intelligence and connectivity to tools provides quality assurance, speed, and improved efficiency. With smart tools connected to the IoT, operators will be freed up to focus on their tasks.

Among the Infinite Possibilities of SYSPRO 8 that will help you revolutionize your company to remain competitive in today's market, here are some that will keep you ahead of the competition now, and well into the future:

SYSPRO 8...

- Has been designed to seamlessly move your company from a system of record towards a system of engagement by improving intuitiveness and surfacing business insights that improve productivity, promote collaboration and encourage workplace autonomy.
- Supports well-defined brand goals, objective measures of progress and regress, correct resourcing and workplace automation. The more engaging the system, the easier the adoption and the more conducive to productivity and worker satisfaction your business will be.
- Keeps you current by ensuring the ongoing evolution of relevant functionality and governance pertinent to your particular operation.
- Presents an "Always On" Cloud-first approach, covering webification, deployment, flexible consumption, diverse accessibility, scalability and 24/7 availability.
- Future-proofs your ERP investment by leveraging the best emerging technologies and the latest ERP innovations such as bots and predictive search as well as the ability to bring machine learning, artificial intelligence and the Internet of Things to market in order to deliver a competitive advantage now – and well into the future.



What's New in SYSPRO 8?

The SYSPRO 8 Dual User interface allows companies to selectively deploy either Windows® or web based solutions according to their requirements. This adds significant value and flexibility to rich-UI intensive users and web-UI users who prefer the web-based engagement with SYSPRO.

SYSPRO Avanti – Simplified and engaging, Avanti is designed to run SYSPRO's applications in the private or public cloud, and can also be deployed on-premise. As a web version of SYSPRO, Avanti is available on any device, on any platform, from anywhere.

SQL only – in today's competitive business world, we require ever more scalability, higher availability with less planned downtime for maintenance, and enterprise-strength data integrity – all while offering excellent performance. As a Microsoft® SQL-only system, SYSPRO 8 gives you all this, and much more.

The Four Product Pillars of SYSPRO

SYSPRO's four Product Pillars are based on a foundation of being simple to use, intuitive, engaging, and always available.



Improved Availability and Scalability

Always On

Mobile-first | Cloud-first



Improved Engagement

System of Engagement

Driving User Collaboration and an Enhanced User Experience



Artificial Intelligence (AI)

Future Proof Your ERP Investment

The Internet of Things (IoT)



Manufacturing

Optimize Operations

Distribution | Financial





Always On

Our Always On strategy for user experience is to deliver any function, process, data, service or intelligence to the end-user's mobility or end-point of choice.

Always On considers whether you want to be cloud-based, on premise, or both. It also considers the costs associated with quickly and seamlessly moving to where your company needs to be.



Improved Availability and Scalability

- Health Check Service designed to reduce scheduled downtime to a bare minimum and improve your core business process availability.
- Open Reporting API maximizes collaboration by providing document generation and distribution to external and integrated systems, reducing the need for duplication. Documents or reports can be quickly and efficiently requested and transferred to the external system via a published API
- Optimizations to SQL enable enhanced database performance by leveraging the latest Microsoft® SQL platform. It provides enterprise-strength data integrity, security, scalability, availability and less planned downtime for maintenance.
- SQL Azure, a cloud-based managed database, ensures there is no need for an on-premise SQL Server. Consumption and cost is based on database usage, you only pay for what you use.



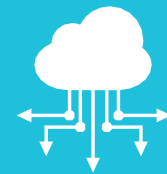
Mobile-first

Espresso Shop Floor Data Collection Workbench provides a mobile solution for capturing all production-related transactions directly from the shop floor. Reduce errors caused by manual data capture, eliminate shop floor paper, improve material accuracy and tracking and provide current production visibility for better decision-making support.

Cloud-first

SYSPRO has chosen Microsoft Azure as its cloud platform of choice. It incorporates a fully integrated web based application which supports Azure's cloud-based protocols. These two tenets leverage Azure's PaaS infrastructure. SYSPRO is continually enriching its product to support cloud-based services such as machine learning and cognitive services.

- SYSPRO Cloud Services – An Infrastructure as a Service (IaaS) offering which controls all core technology, storage and networking capabilities. SYSPRO Cloud Services delivers an always-available fully managed ERP infrastructure, thus removing IT management requirements and allowing you to focus on your core business.
- SYSPRO Avanti – A web based version is accessible on any device, on any platform, from anywhere and is available both on-premise and in the cloud. Simplified and engaging, the Avanti (an Italian word meaning forward or ahead) is designed to run SYSPRO's applications in the private or public cloud, and can also be deployed on-premise. Avanti can be used in parallel with the SYSPRO Windows Client version, allowing a user to use either Avanti or the Windows client version to complete the same task.





System of Engagement

SYSPRO 8 boosts the user experience and promotes improved business behavior through enhanced intuitiveness, simplicity and engaging innovations. It also improves collaboration through Social ERP and Analysis using predictive analytics and Data Sentiment.



Improved Engagement

- Webviews is a user interface designed to be intuitive, flexible, simple to use and easy to consume. Webviews utilizes the latest HTML5 technologies and delivers an uncluttered, simple interface, akin to browsing the web. This innovation surfaces insights that drive business behavior.
- Webviews shows most critical parts of customer accounts in “one snapshot”.
- Predictive searching anticipates queries and issues ahead of time.
- Single screen with actionable insights.
- In the customer query as an example, immediately you can gain an insight as to the customer’s trading status with you, highlighting risk management, contact information and who is responsible for managing them.
- Role-based Workbenches provide users with the complete tools and information needed to perform their roles efficiently and effectively.
- Business Insights provide instant insight into status, KPIs, measures and actions required to improve business behavior.
- Web based interface provides access to SYSPRO via HTML5 on any device and on any platform.

Driving User Collaboration and an Enhanced User Experience

- SYSPRO Harmony provides a familiar and simple social media-type user interface and improves collaboration within the network of the organization. It provides the equivalent of a newsfeed or notifications, auto-populating conversations with relevant information, based on key ERP components the user chooses to ‘follow’. The system intelligently pushes information to the user, alerting the user of activities related to those components.
- Data Sentiment harnesses the power of machine learning on your data to provide you with general sentiment analysis of your transactions. This enables a complete spectrum picture of customer opinion about your services or products for informed and strategic decision making.

Algorithms continuously scan data for sentiment detection (customer opinion about services or products) and surface these sentiments to aid informed and strategic decision making.
- AI and Predictive Analytics are used to reveal trends that provide actionable insight. As with social media, popular trending information can be useful to an organization to understand what entities are trending within the data, and provide the user with a view of data that may not have ordinarily been identified. Vast quantities of structured and unstructured data are aggregated and processed to begin to reflect trends, and offer recommendations on actions to be taken.

Future Proof Your ERP Investment

SYSPRO places a significant amount of focus on innovation and future technologies to keep you ahead of the competition.



The Internet of Things (IoT) and Artificial Intelligence (AI)

Boost productivity by integrating physical and virtual worlds on the manufacturing and distribution floor.



SYSPRO Harmony

Allows businesses to check on the operating status of their business 24/7 in an easy-to-use and recognizable format. A messaging platform the equivalent of Lync, Facebook Messenger or WhatsApp and also enables integration of SYSPRO data into the chat and enables archive and trend analysis in conversation.



Optimize Operations

SYSPRO is ever cognizant of the changing manufacturing and distribution landscape and strives to add value by anticipating marketplace disruptors, ensuring governance and improving business efficiencies.

Manufacturing

Improved manufacturing process control through:

Optimization

- Espresso SFDC provides access to all job-related transactions and work-to-lists available to the shop floor via mobile devices. Operators are directed to their work-to-lists, have insight into job specifications and are presented with a single point-of-entry for recording all their production progress.
- Job Nesting provides the ability to nest multiple jobs utilizing the same raw material or components, reducing wastage and optimizing raw material usage, optimizing use of resources and reducing the cost of operations.
- CAD Integration facilitates the integration of the engineering design process into the manufacturing process and enables collaboration among the aspects of master data management, engineering change and bill of materials management.

Functional Extensions

- Field Service – Insourced and outsourced Field Service integrates materials requirements and resource capacity management into a centralized single process, providing management control to effectively service your customers.
- Plant Maintenance innovation introduces the ability to maintain assets and their service-related schedules, integrate the service, resource and materials requirements, track associated costs against the assets and provide management control for the whole process.

Control and Management

- Manufacturing Operations Management is a Manufacturing Execution System (MES) that helps reduce loss by improving delivery, lowering production costs and optimizing the use of resources by providing the complete process of scheduling, planning, publishing, collecting, analyzing and improving resource usage
- Capable to Promise is a system that helps companies anticipate demand and match it to their peak production and capacities. Using our CTP system allows you to create a balance between what you can produce and what your customers and clients are requesting.



Distribution

Improved distribution process control through:

Procurement Enhancements

- Preferred Vendors provides for the management of sourcing strategies for materials and for the recommended selection of suppliers during the purchasing cycle.
- Return to Vendor (RTV) a formalized return to vendor process allows for the management, auditing and reporting of goods returned to suppliers, ensuring minimum wastage.
- Request for Quotes (RFQ) extends collaboration to your suppliers by providing for the automated quote process and servicing of the RFQ by the supplier - integrated into the procurement process – thus enhancing operational efficiency.
- Shared Services for Procurement centralizes the procurement process, reduces costs and promotes better purchasing contract control, auditing, monitoring, negotiation and lowering of administrative costs.
- Generic Pricing Engine provides a centralized means of setting and expediting pricing prioritization for all sales and purchasing pricing rules. The simple management of all pricing rules, hierarchies, promotions and rebates accelerates the sales and purchasing processes.

Sales Enhancements

- Order Shipping API provides a generic interface for the integration of any shipping or logistic system into the dispatch process of orders.

Inventory Management

- Warehouse Management System (WMS) – Picking and Marshalling provides an innovative extension of the multi-bin functionality and boosts order book fulfilment and the pick management process.
- Multiple Stocking UOMs – manage and transact stock at multiple SKU levels with differentiated costs, sales, stocking and physical attributes with Multiple Stocking UOMs.



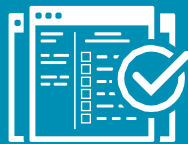
Financial

Better finance management through:



Enhanced Accounts

- Dunning Credit Management reduces risk and aids collections by providing the credit department with management, control and reporting tools.
- Multi-site Shared services (Payables & Receivables) optimizes management capabilities with enhanced debtor and creditor centralized management across multiple sites and legal entities.
- Multi-Currency per Account enhanced multi-currency capabilities allowing the use of any number of currencies during any transaction, against a single account.
- Vendor Approvals and Review management process aiding in the selection, approval and review of suppliers.



Improved Planning and Reporting

- Prophix Corporate Performance Management with integrated reporting, consolidations, financial planning and budget management.

Optimized Control

- Balance Separation and Optimization, enhanced balance and month-end processes, reducing time taken to close and report on financial periods.
- Ledger Reconciliations providing improved ledger reconciliation management through the balancing and identification of outstanding tasks and transactions in the sub-ledgers.
- Detailed Postings to Control Accounts
- Date-driven Period Transacting provides date-driven financial periods for fiscal transacting and reporting, automated to financial periods.



About SYSPRO

Established in 1978, SYSPRO is an industry-built Enterprise Resource Planning (ERP) solution designed to simplify business complexity for manufacturers and distributors worldwide. SYSPRO provides an end-to-end business solution for optimized cost control, streamlined business processes, improved productivity, and real-time data analysis for comprehensive reporting and decision-making. SYSPRO is highly scalable and can be deployed either in the cloud, on-premise or accessed via any mobile device.

Combined with a practical approach to technology and a passionate commitment to simplifying business processes, SYSPRO dedicates itself to the success of its partners and customers alike.

SYSPRO's intuitive product features, business intelligence capabilities, and easy deployment methodology are unmatched in the marketplace. The depth of software functionality and targeted industry knowledge makes SYSPRO an excellent fit for a number of select manufacturing and distribution industries, including food and beverage, machinery and equipment, electronics, fabricated metals, automotive, and many more.



AFRICA

SYSPRO South Africa
Block A
Sunninghill Place
9 Simba Road
Sunninghill
Johannesburg
2191
South Africa
Tel: +27 (0) 11 461 1000
Email: info@za.syspro.com

SYSPRO South Africa
Block A
Lagoon Beach Office Park
Cnr Marine & Boundary Rd
Milnerton
Cape Town
7435
South Africa
Tel: +27 (0) 21 552 2220
Email: info@za.syspro.com

SYSPRO South Africa
4 Nollsworth Crescent
Nollsworth Park
La Lucia Ridge
La Lucia
Durban North
4019
South Africa
Tel: +27 (0) 31 566 4240
Email: info@za.syspro.com

SYSPRO East Africa
Ground Floor - Office No.1 E
Panari Sky Centre
Mombasa Road
Nairobi
Kenya
Tel: +254 720 909 644
+254 720 909 530
Email: info@za.syspro.com

ASIA-PACIFIC

SYSPRO Australia
Suite 1102, Level 12
201 Miller Street
North Sydney
NSW 2060
Australia
Tel: +61 (2) 9870 5555
Toll free: +1 300 882 311
Email: info@au.syspro.com

SYSPRO Australia
1/14 Business Park Drive
Notting Hill
Victoria
Melbourne
3168
Australia
Tel: +1300 882 311
E-mail: info@au.syspro.com

SYSPRO Asia
8 Eu Tong Sen Street
#19-91 The Central
Singapore
059818
Tel: +65 6256 1921
E-mail: info@sg.syspro.com

CANADA

SYSPRO Canada
4400 Dominion Street
Suite 215
Burnaby
Vancouver
British Columbia
Canada
V5G 4G3
Tel: +1 (604) 451 8889
Toll free: +1 888 259 6666
Email: info@ca.syspro.com

SYSPRO Canada
5995 Avebury Road
Suite 902
Mississauga
Toronto
Ontario
Canada
L5R 3P9
Tel: +1 905 502 5502
Email: info@ca.syspro.com

SYSPRO Canada
6080 Young Street
Suite 1002
Halifax
Nova Scotia
Canada
B3K 5L2
Tel: +1 902 423 1256
Toll free: +1 866 979 7776
Email: info@ca.syspro.com

EUROPE

SYSPRO United Kingdom
Baltimore House
50 Kansas Avenue
Salford Quays
Manchester
United Kingdom
M50 2GL
Tel: +44 161 876 4498
Email: info@uk.syspro.com

USA

SYSPRO USA and Americas
959 South Coast Drive
Suite 100
Costa Mesa
California
92626
USA
Tel: +1 (714) 437 1000
Toll free: +1 800 369 8649
Email: info@us.syspro.com